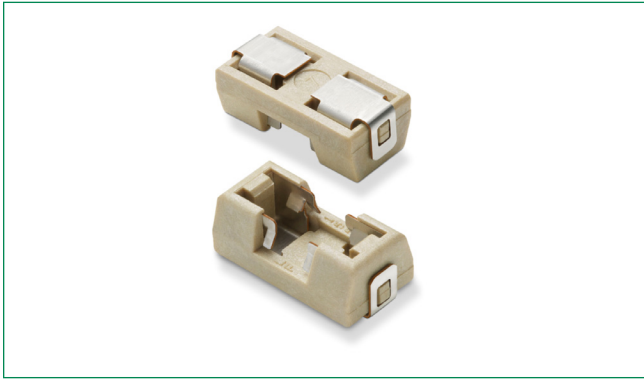


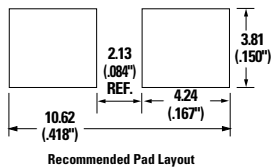
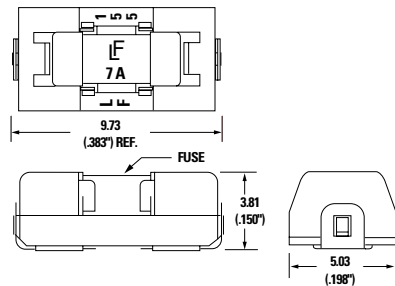
155900 Series OMNI-BLOK® Fuseblock



**Agency Approvals**

| Agency | Agency File Number | Ampere Range |
|--------|--------------------|--------------|
|        | E14721             | 10 A         |

**Dimensions in mm (inch)**



**Description**

The RoHS compliant 155 Series OMNI-BLOK® offers a solution for efficient installation and easy replacement of miniature Nano2® surface mount fuses. Offered bulk but also in a tape and reel package, this block can be installed on a PC board as an efficient single step. Fuse replacement can be accomplished without exposing the PC board to the detrimental effects of solder heat.

**Features**

- Easy fuse replacement
- Miniature size
- RoHS-compliant and Halogen-free
- Very Fast-Acting and Time-Lag options available
- Holder sized to fit a range of [Nano2® type fuses](#)
- Suitable for applications up to 125 V and 10 A
- Wide operating temperature range
- Heat-resistant fuseholder, UL94 V-0
- 260 °C reflow capable fuseholder
- Recognized to UL/CSA/ NMX 4248-1

**Additional Information**



Datasheet



Resources



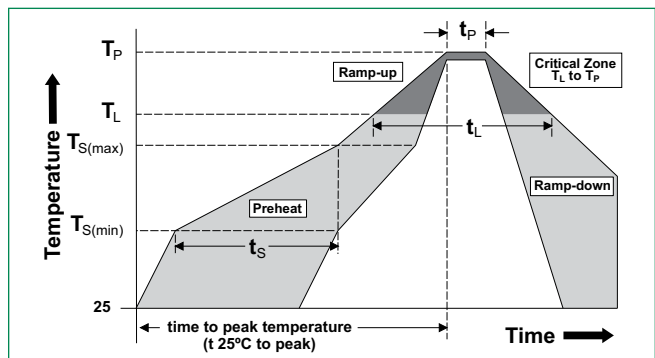
Samples

**Packaging**

| Part Number | Packaging Specification | Quantity | Packaging Option |
|-------------|-------------------------|----------|------------------|
| 01550900DR  | EIA-481, IEC 60286-3    | 1500     | Tape and Reel    |
| 01550900M   | EIA-481, IEC 60286-3    | 1000     | Bulk             |

**Soldering Parameters**

|  |                                    |                         |
|--|------------------------------------|-------------------------|
| <b>Reflow Condition</b>  |                                    | Pb-free assembly        |
| <b>Pre Heat</b>  | - Temperature Min ( $T_{s(min)}$ ) | 150 °C                  |
|  | - Temperature Max ( $T_{s(max)}$ ) | 200 °C                  |
|  | - Time (Min to Max) ( $t_s$ )      | 60–180 seconds          |
| <b>Average Ramp-up Rate (Liquidus Temp (<math>T_L</math>) to peak)</b> |                                    | 5 °C/second max.        |
| <b><math>T_{s(max)}</math> to <math>T_L</math> - Ramp-up Rate</b>      |                                    | 5 °C/second max.        |
| <b>Reflow</b>  | - Temperature ( $T_L$ ) (Liquidus) | 217 °C                  |
|  | - Temperature ( $t_L$ )            | 60–150 seconds          |
| <b>Peak Temperature (<math>T_p</math>)</b>                             |                                    | 260 <sup>+0/-5</sup> °C |
| <b>Time within 5 °C of actual peak Temperature (<math>t_p</math>)</b>  |                                    | 20–40 seconds           |
| <b>Ramp-down Rate</b>  |                                    | 5 °C/second max.        |
| <b>Time 25 °C to peak Temperature (<math>T_p</math>)</b>               |                                    | 8 minutes max.          |
| <b>Do not exceed</b>   |                                    | 260 °C                  |



**Product Characteristics**

**Operating Temperature** -55 °C to 125 °C

**Disclaimer Notice** - Information furnished is believed to be accurate and reliable. However, users should independently evaluate the suitability of and test each product selected for their own applications. Littelfuse products are not designed for, and may not be used in, all applications. Read complete Disclaimer Notice at: [www.littelfuse.com/disclaimer-electronics](http://www.littelfuse.com/disclaimer-electronics).