

870 Series

Medical Grade Shock-Safe Holder for 5×20mm Fuses



Product Characteristics 870

Compatible Fuses	For Shocksafe, Medical Grade, 5×20mm fuses
Materials	Holder/Cap: Black Thermoplastic, UL 94V0 Metal Parts: Copper alloy, corrosion protected Terminals: Solderable, tinned
Electrical Data (23°C)	Rated Voltage: 250V Rated Current: 10A Rated Power: 1.6W (VDE)
Mounting	12.7mm diameter D-hole or 13mm round hole Admissible torque on plastic hex nut is 1.2Nm
Terminals	Solderable or 4.8mm quick connect-fits 0.5mm tab
Protection Class & Category	IP 40 (IEC 60529) PC3 (IEC 60127-6) Live parts are fully inaccessible to a 1mm diameter probe
Operating Temperature	-40°C to +85°C
Climatic Test	-40°C/+85°C/21 days (IEC 60068-2-1...3)
Stock Conditions	0°C to 60°C, max. 70% R.H.
Contact Resistance	≤ 5mΩ at 20 mV
Impulse Voltage	4 kV, 50Hz, 1 min., dry
Insulation Resistance	> 10 ³ MΩ (500VDC, 1 min.)
Solderability	350°C, 2 sec. acc. to IEC 60068-2-20, Test Ta method 2
Soldering Heat Resistance	350°C, 10 sec. (IEC 60068-2-20) acc. to IEC 60068-2-20, Test Tb, method 2
Minimum Cross Section	Conductor - 2.5mm ²
Marking	870, 250V, Agency Approvals
Unit Weight	5.6g

Additional Information



Resources

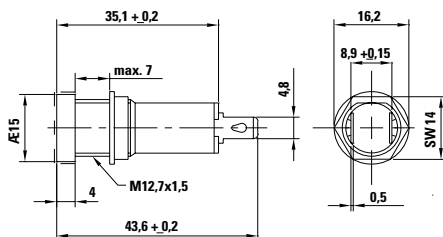


Accessories

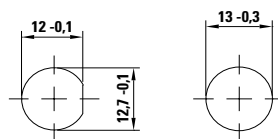


Samples

Dimensions 870



Includes Captive Cap



Panel alternatives

Refer to [Fuseology](#) for information on proper fuseholder re-rating.

Agency Approvals

Agency	Agency File Number
	40003282
	E70164

Ordering Information

Ordering Number	Packaging
87000001009	Bulk 100 Pcs

Disclaimer Notice - Information furnished is believed to be accurate and reliable. However, users should independently evaluate the suitability of and test each product selected for their own applications. Littelfuse products are not designed for, and may not be used in, all applications. Read complete Disclaimer Notice at: www.littelfuse.com/disclaimer-electronics.