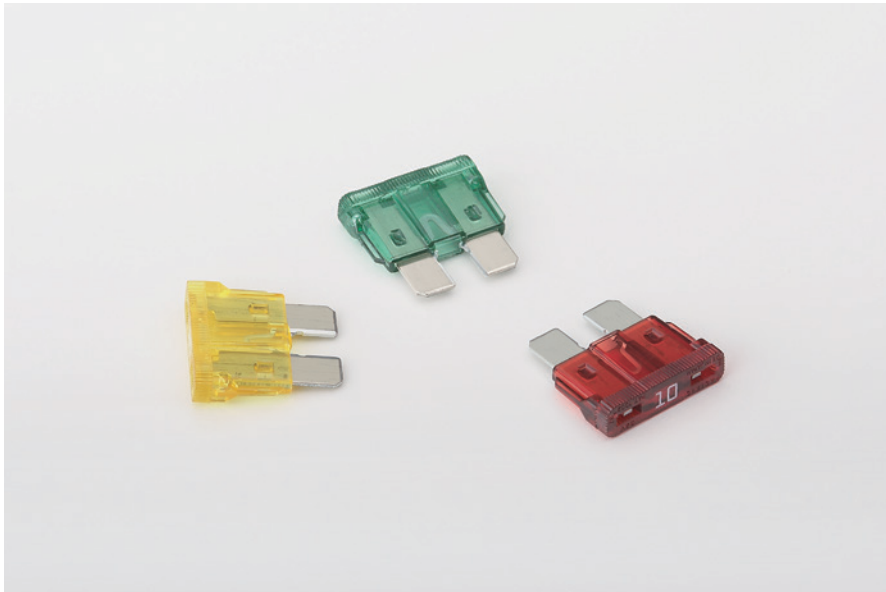


BFAT-D

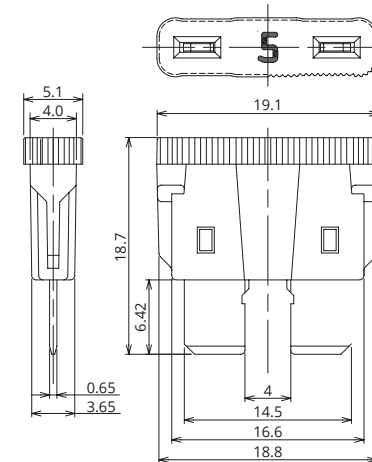
The BFAT is a blade fuse that has spread extensively in non-automotive applications



General Specification

Rated Voltage	DC32V
Breaking Capacity	1000A
Operation Temperature	-40°C~80°C
Standard	ISO8820-3
Country of Origin	Japan
Plating	Sn Plating
Standard Packaging	12,000
Insertion Force	—
Extraction Force	—
Recommended Torque	—

Dimensions



Product Lineup

Ampere Rating(A)	Part Number	Housing Colors	Resistance Value	Voltage Drop
1	1039	Black	156 mΩ	225 mV
2	1021	Gray	55.6 mΩ	175 mV
3	1022	Violet	31.7 mΩ	133 mV
4	1023	Pink	22.7 mΩ	128 mV
5	1041	Tan	17.5 mΩ	121 mV
7.5	1042	Brown	11.0 mΩ	112 mV
10	1043	Red	8.12 mΩ	116 mV
15	1044	Blue	5.08 mΩ	105 mV
20	1045	Yellow	3.58 mΩ	99 mV
25	1046	Natural	2.76 mΩ	96 mV
30	1047	Green	2.20 mΩ	92 mV
35	1024	Dark Green	1.76 mΩ	91 mV
40	1048	Orange	1.48 mΩ	95 mV

Time-Current Characteristic

% of Ampere Rating(A)	Operating Time	
	Min	Max
110%	100hrs.	—
135%	0.75sec.	600sec.
160%	0.25sec.	50sec.
200%	0.15sec.	5sec.
350%	0.04sec.	0.5sec.
600%	0.02sec.	0.1sec.

*The fuse characteristic may change depending on the conditions of use.

Time-Current Characteristic Chart

