

BFSL-3

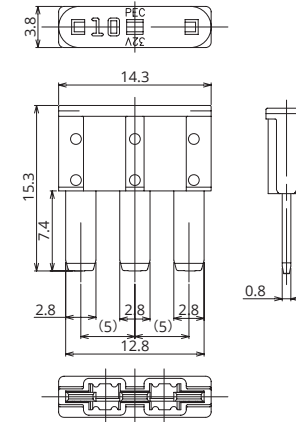
BFSL-3 is a multi terminal state-of-the-art blade fuse



General Specification

Rated Voltage	DC32V
Breaking Capacity	1000A
Operation Temperature	-40°C~80°C
Standard	—
Country of Origin	Japan
Plating	Ag Plating
Standard Packaging	10,000
Insertion Force	—
Extraction Force	—
Recommended Torque	—

Dimensions



Product Lineup

Ampere Rating(A)	Part Number	Housing Colors	Resistance Value	Voltage Drop
5	1183	Tan	16.9 mΩ	110 mV
7.5	1184	Brown	10.6 mΩ	104 mV
10	1185	Red	7.94 mΩ	104 mV
15	1186	Blue	5.07 mΩ	97 mV

Time-Current Characteristic

% of Ampere Rating(A)	Operating Time	
	Min	Max
110%	100hrs.	—
135%	0.75sec.	120sec.
160%	0.25sec.	50sec.
200%	0.15sec.	5sec.
350%	0.04sec.	0.5sec.
600%	0.02sec.	0.1sec.

*The fuse characteristic may change depending on the conditions of use.

Time-Current Characteristic Chart

