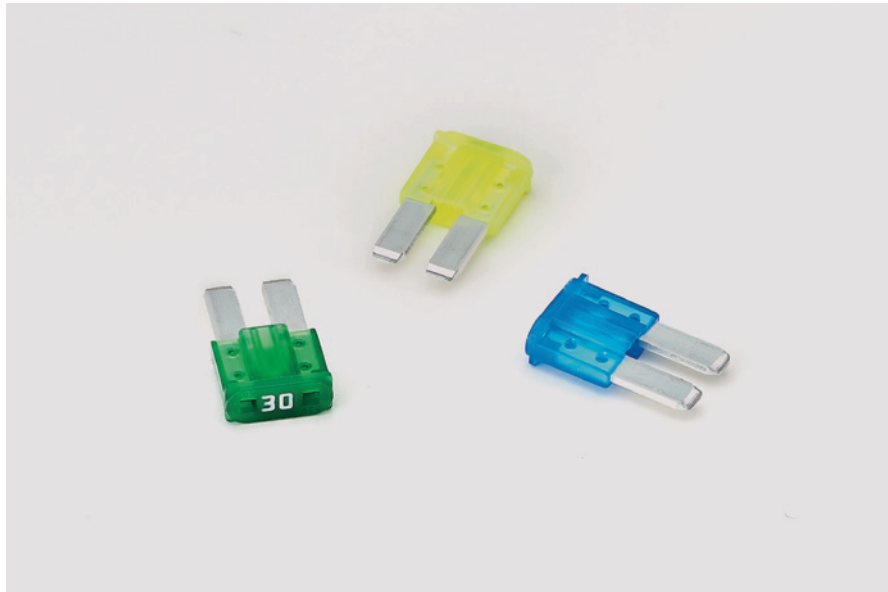


BFSL

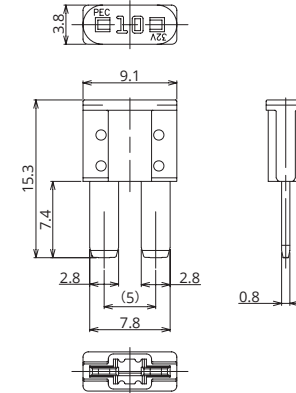
This state-of-the-art blade fuse was realized by reducing the width of the BFMN to offer space reduction








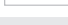
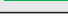
General Specification

Rated Voltage	DC32V
Breaking Capacity	1000A
Operation Temperature	-40°C~80°C
Standard	—
Country of Origin	Japan
Plating	Ag Plating
Standard Packaging	18,000
Insertion Force	—
Extraction Force	—
Recommended Torque	—

Dimensions



Product Lineup

Ampere Rating(A)	Part Number	Housing Colors	Resistance Value	Voltage Drop
5	1173	Tan 	17.3 mΩ	117 mV
7.5	1174	Brown 	10.7 mΩ	109 mV
10	1175	Red 	7.85 mΩ	104 mV
15	1176	Blue 	5.05 mΩ	100 mV
20	1177	Yellow 	3.65 mΩ	95 mV
25	1178	Natural 	2.75 mΩ	88 mV
30	1179	Green 	2.18 mΩ	82 mV

Time-Current Characteristic

% of Ampere Rating(A)	Operating Time	
	Min	Max
110%	100hrs.	—
135%	0.75sec.	120sec.
160%	0.25sec.	50sec.
200%	0.15sec.	5sec.
350%	0.04sec.	0.5sec.
600%	0.02sec.	0.1sec.

*The fuse characteristic may change depending on the conditions of use.

Time-Current Characteristic Chart

