

CH14/P aM 2A/500V 1433902



Specifications

ETI Code	006711029
Description	CH14/P aM 2A/500V 1433902
Weight	.023
Level	Cilindrical fuse links aM
Product group	C low Voltage cylindrical fuses
Characteristics	aM
Rated AC voltage (V)	500
Rated current (A)	2
Type	CH
Size	CH14
Breaking capacity AC (kA)	80
Dimensions	14x51
Indicator	striker

Online product page [🔗](#)

Other documentation



[EU declaration](#)

[Technical data catalogue](#)

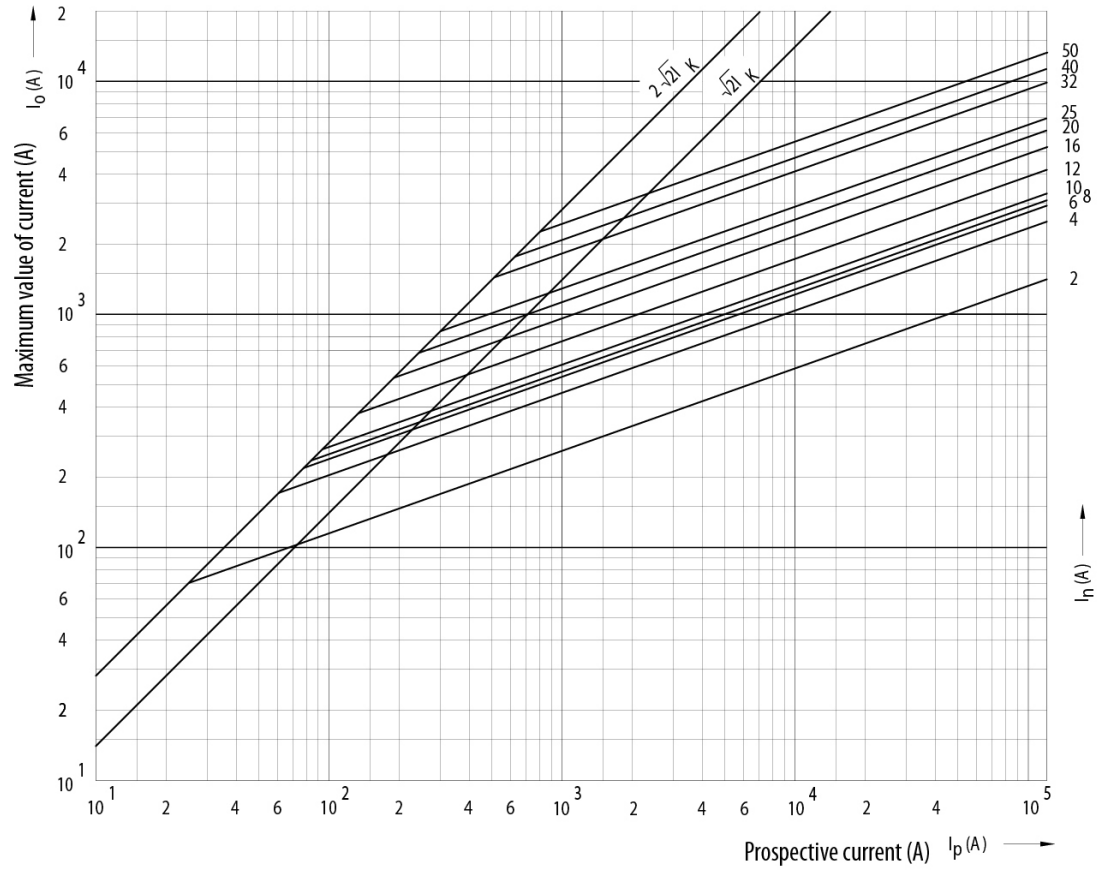


ETIM international clasification

Nominal current	2A
Size	14x51 mm
Rated voltage	AC 500/600 V
With striker	true

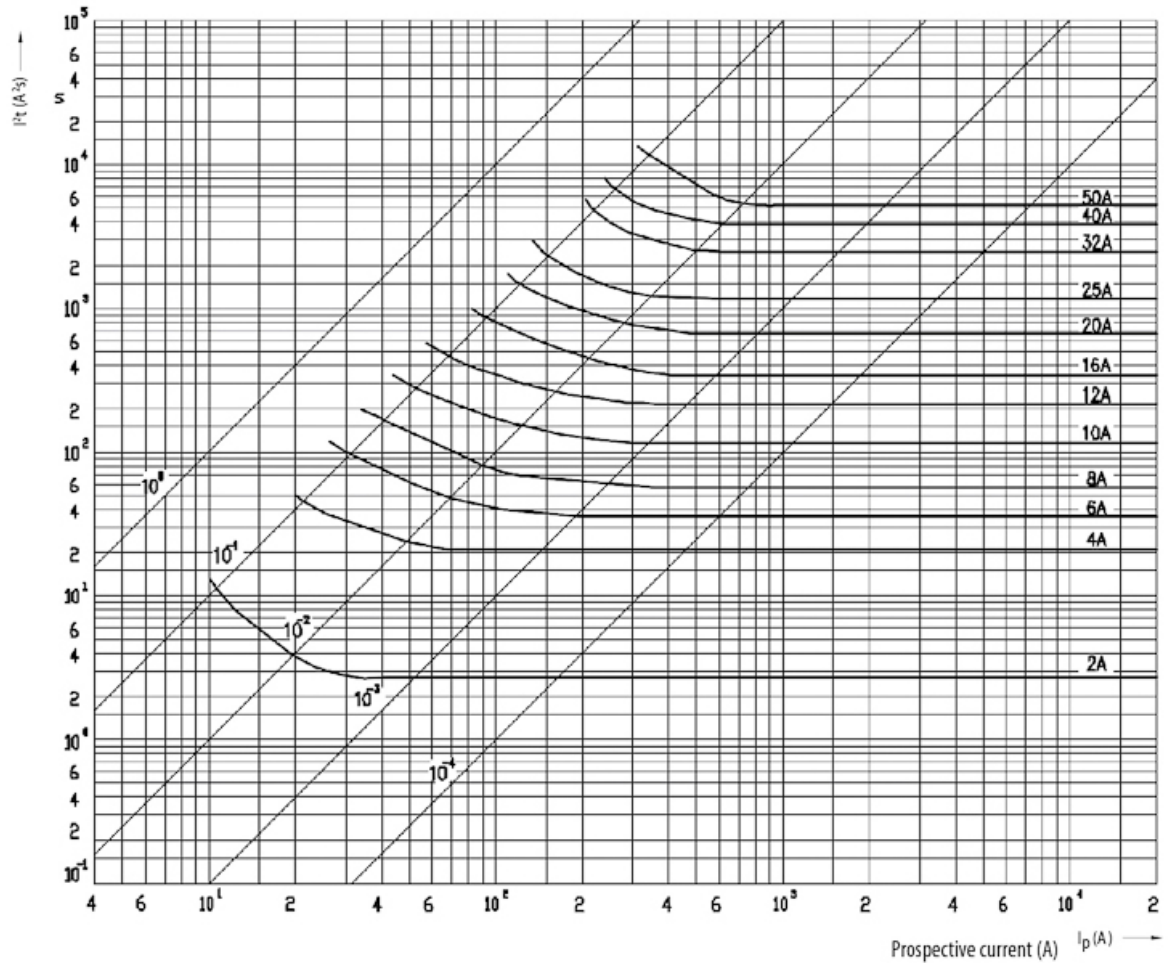
Cut-off current characteristics

Cut-off current characteristics
CH14



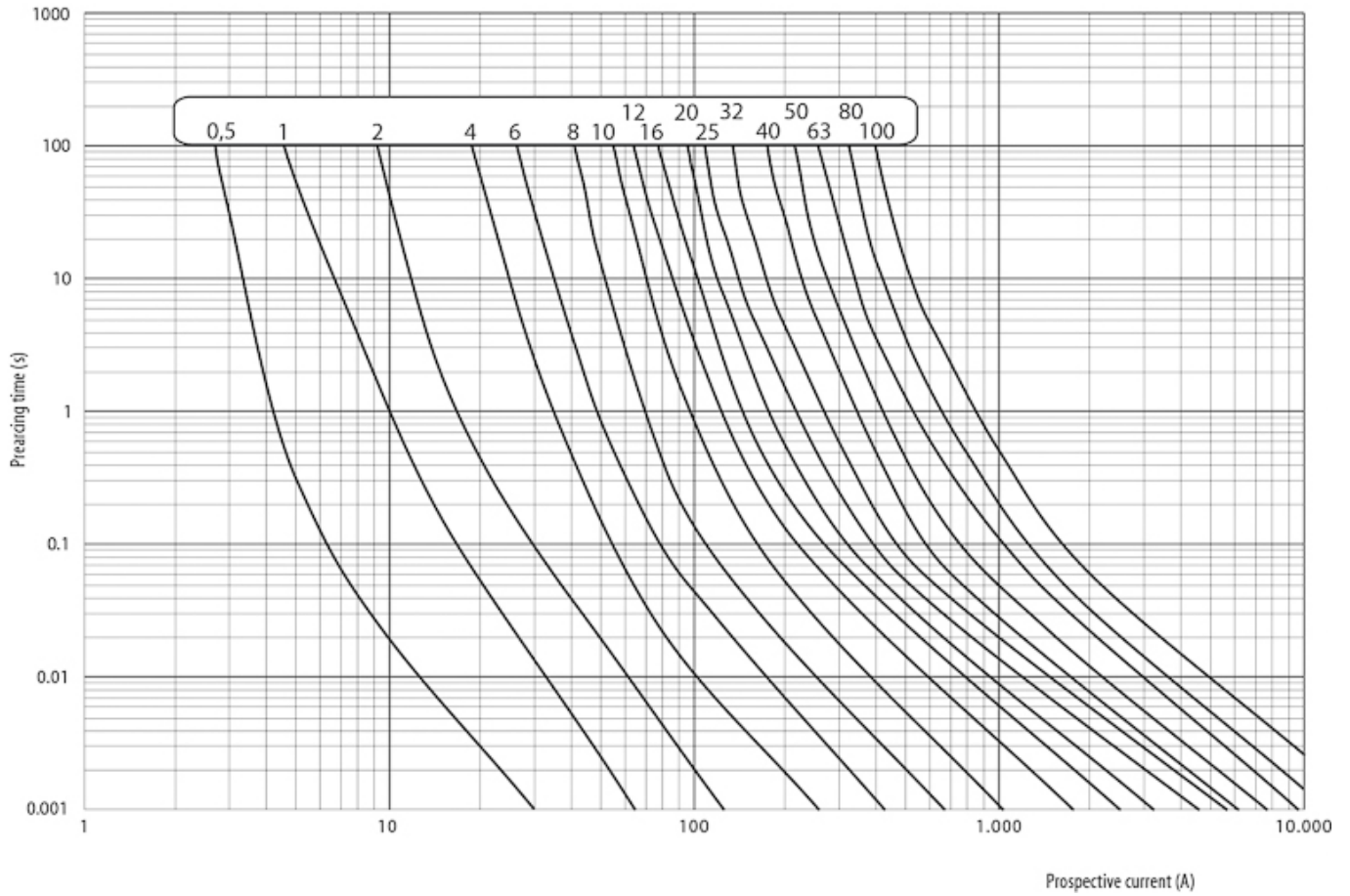
Melting energy characteristics

Melting energy characteristics I²t
CH14

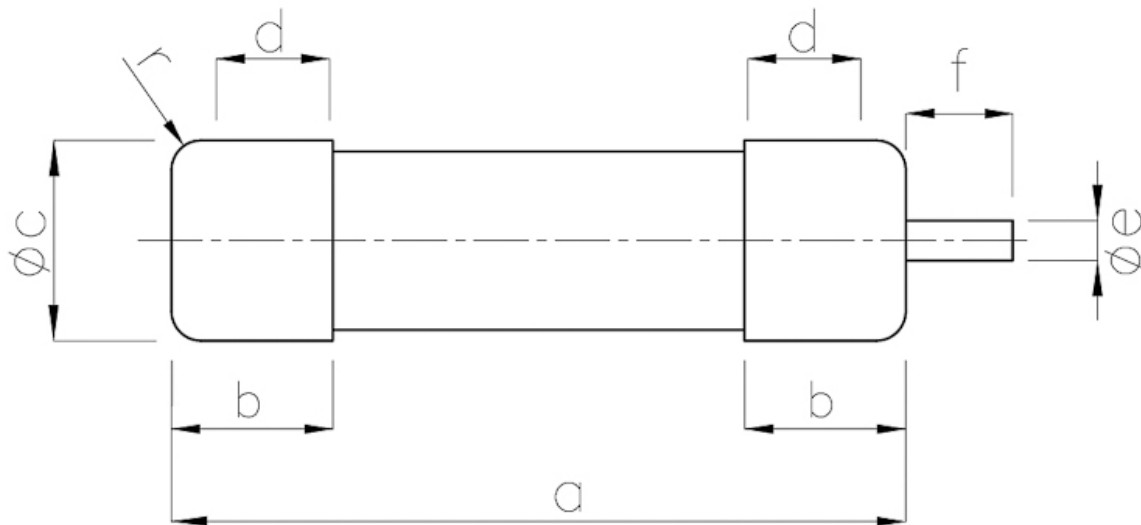


Time current characteristics

Time current characteristics I/t, aM
CH10, 14, 22



Dimension drawing



	a	b _{max.}	c	d _{min.}	r	e	f
14 x 51	51,0+0,6/-1	13,8	14,3±0,1	7,5	±1	3,8	7,5
22 x 58	58,0+0,1	16,2	22,2±0,1	11	±1	3,8	7,5