

# EVFC(φ20)

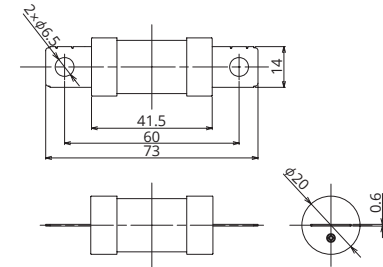
High Voltage automotive fuses with excellent durability properties



### General Specification

Rated Voltage	DC500V
Breaking Capacity	10000A
Operation Temperature	-40°C~125°C
Standard	—
Country of Origin	Japan
Plating	Ni Plating
Standard Packaging	140
Insertion Force	—
Extraction Force	—
Recommended Torque	9N±1

### Dimensions



### Product Lineup

Ampere Rating(A)	Part Number	Bolt Size	Diameter	Resistance Value	Voltage Drop*1
60	2794	M6	φ20	1.30 mΩ	120 mV

\*1 Voltage drop: apply 50% of the rated current.

\*In case a product other than the ones published in this document is desired, please contact us for details.

### Time-Current Characteristic

% of Ampere Rating(A)	Operating Time	
	Min	Max
110%	4hrs.	—
135%	150sec.	3600sec.
150%	20sec.	1000sec.
200%	8sec.	150sec.
300%	1sec.	15sec.
500%	0.05sec.	1sec.

\*The fuse characteristic may change depending on the conditions of use.

### Time-Current Characteristic Chart

