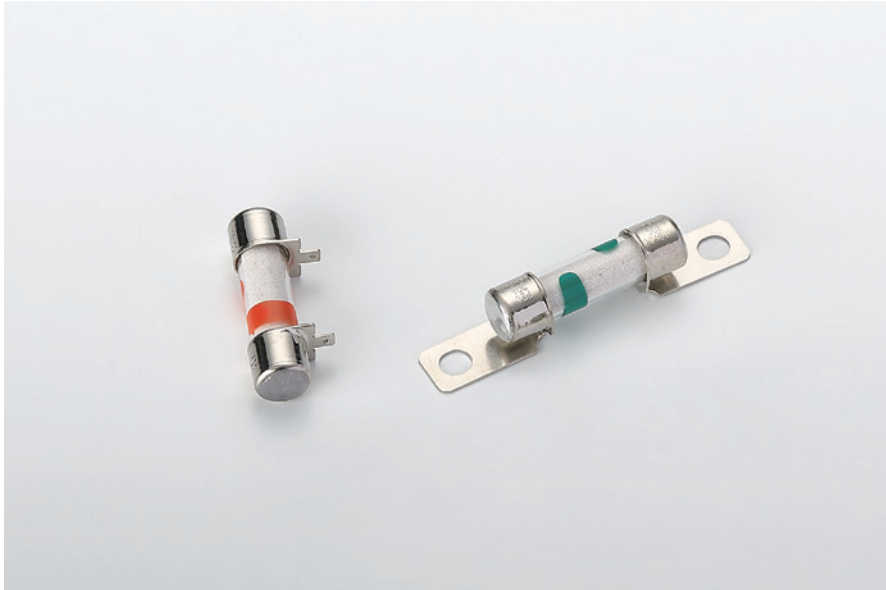


EVFG($\phi 10.3$)

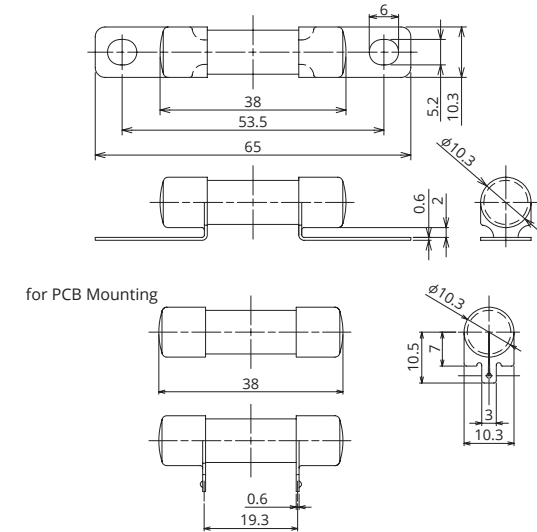
Fuses to protect auxiliary system circuits such as electric compressors and DC/DC converters



General Specification

Rated Voltage	DC450V
Breaking Capacity	2000A
Operation Temperature	-40°C~100°C
Standard	—
Country of Origin	Japan/Thailand
Plating	Ni Plating
Standard Packaging	200
Insertion Force	—
Extraction Force	—
Recommended Torque	4.5N±1.0

Dimensions



Product Lineup

Ampere Rating(A)	Part Number	Bolt Size	Diameter	Resistance Value	Voltage Drop*1
15	2744	M5	$\phi 10.3$	7.4 m Ω	63 mV
20	2743			4.2 m Ω	47 mV
30	2742			2.8 m Ω	47 mV
40	2748			2.1 m Ω	48 mV
50	2749			1.6 m Ω	48 mV
40	2645	for PCB Mounting		—	—

*1 Voltage drop: apply 50% of the rated current.

*In case a product other than the ones published in this document is desired, please contact us for details.

Time-Current Characteristic

% of Ampere Rating(A)	Operating Time	
	Min	Max
110%	4hrs.	—
135%	300sec.	3600sec.
200%	5sec.	100sec.
300%	0.5sec.	15sec.
500%	—	1sec.

*The fuse characteristic may change depending on the conditions of use.

Time-Current Characteristic Chart

