

EVFP($\phi 30$)

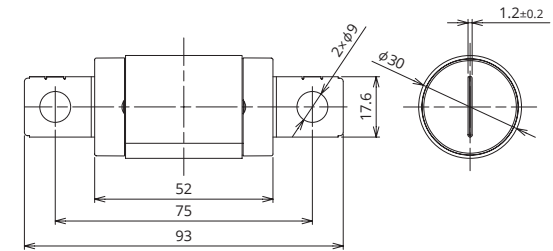
Lightweight and compact High Voltage automotive fuses with excellent vibration resistance properties



General Specification

Rated Voltage	DC450V
Breaking Capacity	2000A 6000A(2944)
Operation Temperature	-40°C~85°C
Standard	—
Country of Origin	Japan
Plating	—
Standard Packaging	80
Insertion Force	—
Extraction Force	—
Recommended Torque	16.5N \pm 1.7 6.0N \pm 1.0(2944)

Dimensions



*For part no. 2944, the bolt size is M6 with a terminal thickness of 2.0 \pm 0.2

Product Lineup

Ampere Rating(A)	Part Number	Bolt Size	Diameter	Resistance Value	Voltage Drop*1
150	2845	M8	$\phi 30$	0.50 m Ω	42.5 mV
175	2847			0.45 m Ω	44.0 mV
200	2843			0.39 m Ω	44.6 mV
225	2848			0.35 m Ω	43.2 mV
250	2842			0.30 m Ω	43.8 mV
	2944			0.31 m Ω	43.6 mV

*1 Voltage drop: apply 50% of the rated current.

*In case a product other than the ones published in this document is desired, please contact us for details.

Time-Current Characteristic

% of Ampere Rating(A)	Operating Time	
	Min	Max
110%	4hrs.	—
200%	5sec.	100sec.
300%	0.5sec.	15sec.
500%	—	1sec.

*The fuse characteristic may change depending on the conditions of use.

Time-Current Characteristic Chart

