

FWX — North American

250 Vac/dc (UL), 35 to 2500 A

North American style bolted tags and flush-end high speed fuses for the protection of DC common bus, DC drives, power converters/rectifiers and reduced rated voltage starters.

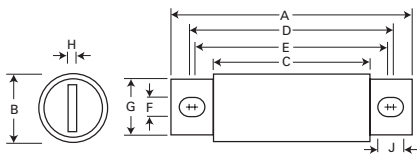
Ratings

- Volts 250 Vac/dc (UL)
- Amps 35-2500 A
- IR
 - 200 kA RMS Sym.
 - 20 kA at 250 Vdc (35-800 A)

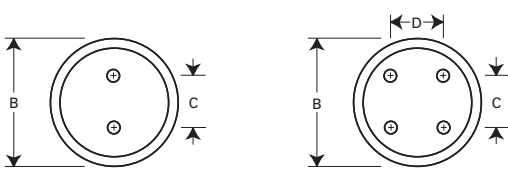
Agency information

- UL Recognized, JFHR2, E56412
- CSA Class 1422-30, (53787) on 35-800 A fuses (20 kA IR at 250 Vdc)
- CE

Dimensions — in



35-800 A



1000-1200 A

1500-2500 A

| Amp range | A | B | C | D | E | F | G | H | J | Thread / depth |
|-----------|------|------|------|------|------|------|------|------|------|----------------|
| 35-60 | 3.19 | 0.81 | 1.59 | 2.59 | 2.25 | 0.34 | 0.63 | 0.13 | 0.52 | — |
| 70-200 | 3.13 | 1.22 | 1.59 | 2.44 | 2.19 | 0.34 | 1.00 | 0.19 | 0.47 | — |
| 225-600 | 3.84 | 1.50 | 1.59 | 2.94 | 2.25 | 0.41 | 1.00 | 0.25 | 0.75 | — |
| 700-800 | 3.84 | 2.00 | 1.59 | 3.03 | 2.28 | 0.41 | 1.50 | 0.25 | 0.78 | — |
| 1000-1200 | 2.59 | 3.00 | 1.50 | — | — | — | — | — | — | 3/8-24 |
| 1500-2500 | 2.59 | 3.50 | 1.50 | 1.50 | — | — | — | — | — | x 1/2" UNF |

1" = 25.4mm



| Rated voltage | I ² t (A ² s) | | | Watts loss (W)* | Catalog no. |
|---------------|-------------------------------------|------------|---------------------|-----------------|-------------|
| | Rated current (amps) | Pre-arcing | Clearing at 250 Vac | | |
| 35 | 50 | 230 | 4.2 | FWX-35A | |
| 40 | 60 | 310 | 5.2 | FWX-40A | |
| 45 | 80 | 390 | 5.7 | FWX-45A | |
| 50 | 100 | 520 | 6.0 | FWX-50A | |
| 60 | 140 | 740 | 8.1 | FWX-60A | |
| 70 | 330 | 1400 | 7.2 | FWX-70A | |
| 80 | 430 | 1850 | 8.1 | FWX-80A | |
| 90 | 570 | 2450 | 9.0 | FWX-90A | |
| 100 | 740 | 3150 | 10.0 | FWX-100A | |
| 125 | 1130 | 4850 | 12.5 | FWX-125A | |
| 150 | 1620 | 6950 | 15.7 | FWX-150A | |
| 175 | 2170 | 9300 | 18.5 | FWX-175A | |
| 200 | 2790 | 12,000 | 22.0 | FWX-200A | |
| 225 | 3210 | 14,700 | 24.0 | FWX-225A | |
| 250 | 3960 | 18,100 | 27.0 | FWX-250A | |
| 275 | 4720 | 21,600 | 31.0 | FWX-275A | |
| 300 | 6000 | 27,300 | 32.0 | FWX-300A | |
| 350 | 10,600 | 48,600 | 39.0 | FWX-350A | |
| 400 | 14,500 | 66,100 | 44.0 | FWX-400A | |
| 450 | 22,100 | 101,000 | 49.0 | FWX-450A | |
| 500 | 28,000 | 128,000 | 54.0 | FWX-500A | |
| 600 | 41,100 | 188,000 | 62.0 | FWX-600A | |
| 700 | 48,800 | 190,000 | 72.0 | FWX-700A | |
| 800 | 59,000 | 230,000 | 84.0 | FWX-800A | |
| 1000 | 44,000 | 360,000 | 100.0 | FWX-1000AH | |
| 1200 | 92,000 | 750,000 | 103.0 | FWX-1200AH | |
| 1500 | 120,000 | 880,000 | 140.0 | FWX-1500AH | |
| 1600 | 160,000 | 1,200,000 | 140.0 | FWX-1600AH | |
| 2000 | 320,000 | 2,300,000 | 151.0 | FWX-2000AH | |
| 2500 | 670,000 | 4,700,000 | 163.0 | FWX-2500AH | |

250 Vac/dc (UL)

High speed fuses

* Watts loss at rated current.