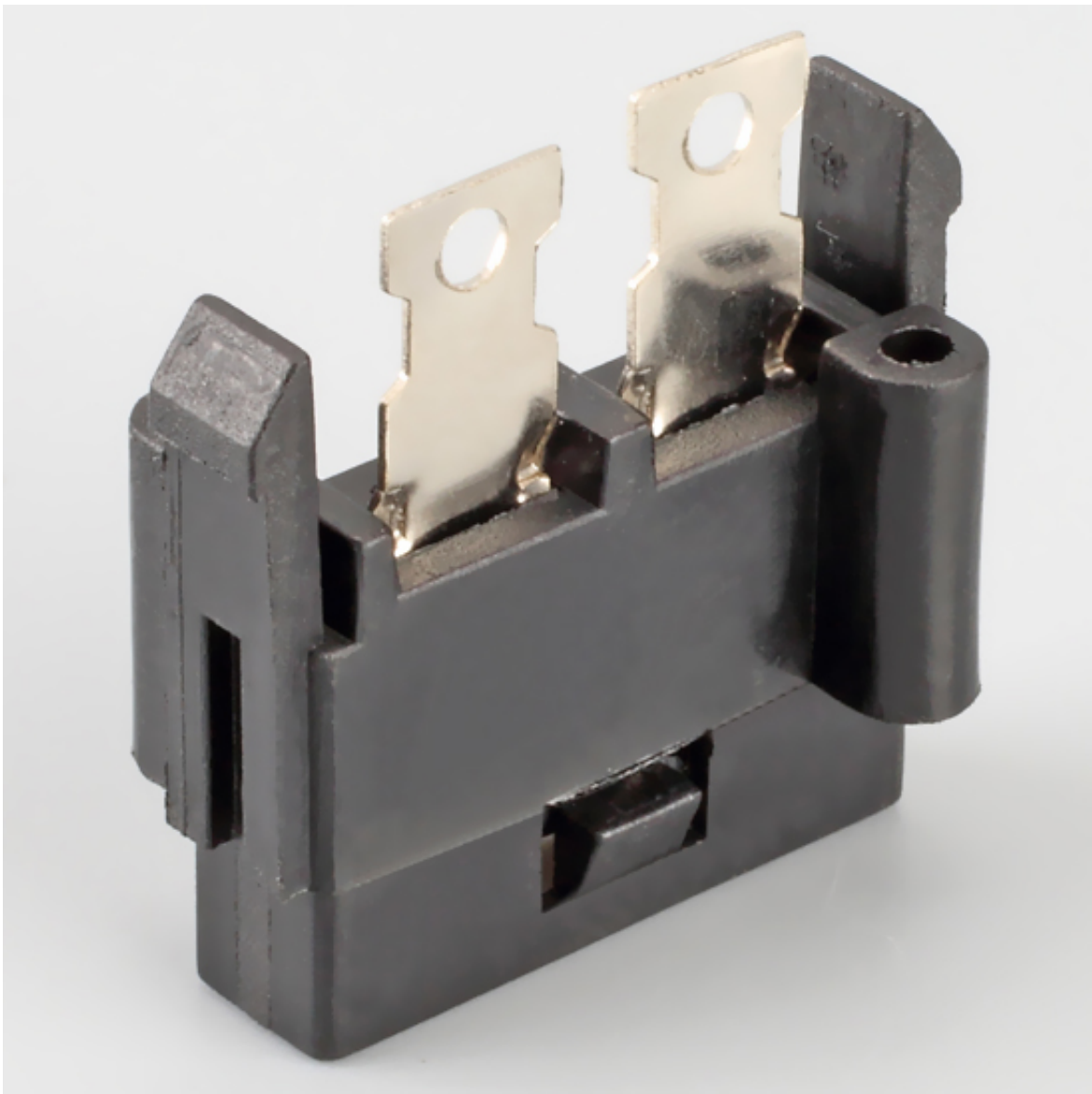

inline blade fuse holder,waterproof

1. Product Name:[Fuse Holder](#)/fuse base
2. model:H3-36
3. Voltage breakdown:AC1500 1minute
4. insulation resistance:DC 500V 100M? Min
5. Rating:30A 32-250VDC
6. Temperature tolerance:-30° C -150° C
7. Standard:IEC-60335-1 GB_9364.6-2001
8. Certification:ISO9001, ROHS,
9. Mounting Ways:PCB board installation
10. Material:Hot silicone, brass.
11. Fuse size:Medium insert fuse
12. Application:Applicable to all cars, electric cars, audio and other equipmet



- 1.
- 2.

- 3.
- 4.

