

NH4 gG 630A/500V



Specifications

ETI Code	004116101
Description	NH4 gG 630A/500V
Weight	2.115
Level	Fuse links NH gG up to AC 690V
Product group	NV/NH low voltage NH knife blade fuses
Characteristics	gL/gG (cable protection/equipment protection)
Rated AC voltage (V)	500
Rated current (A)	630
Type	NH
Size	NH4
Breaking capacity AC (kA)	120
Indicator	Top fuse status indicator

Online product page [🔗](#)

Other documentation



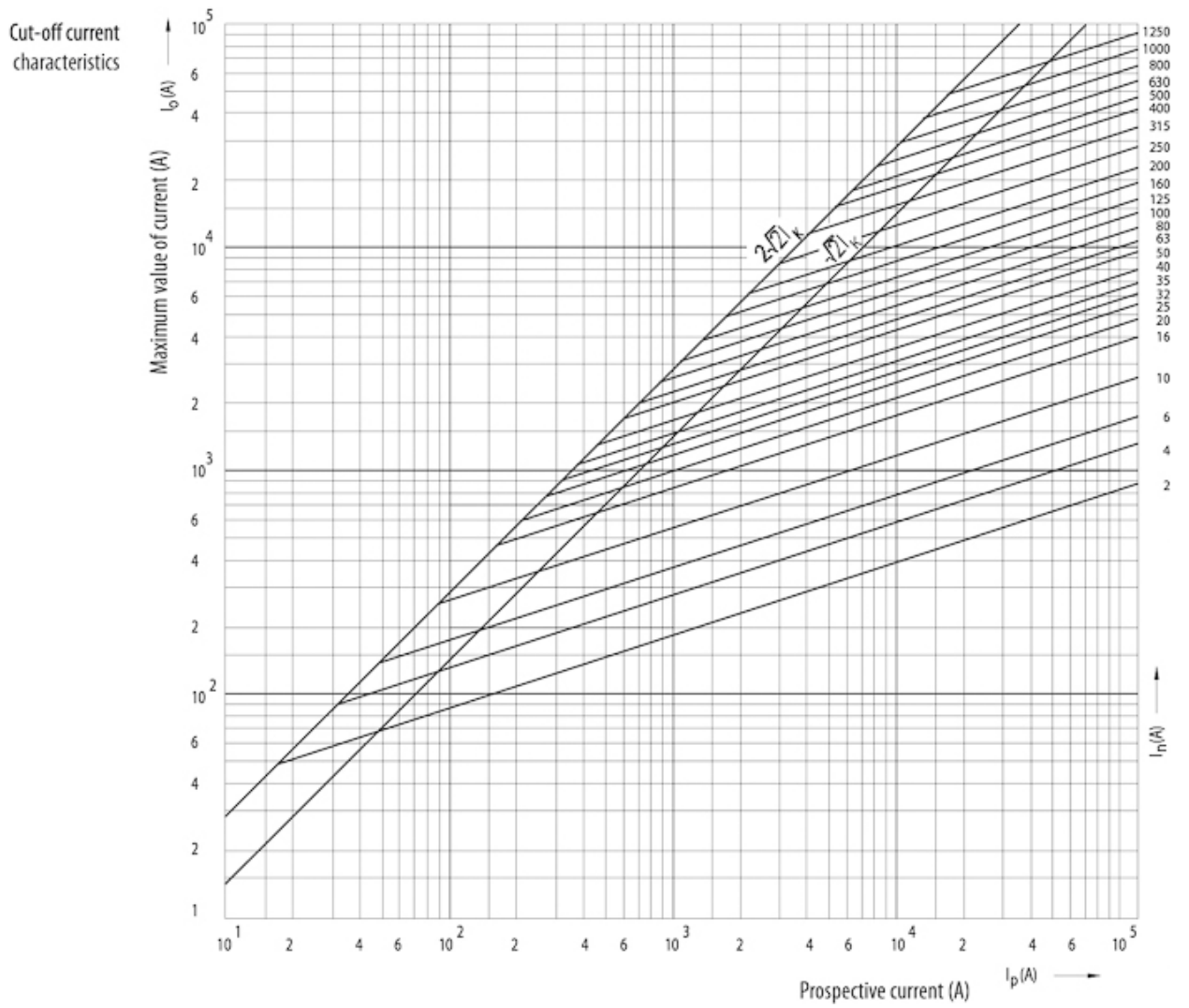
Technical data catalogue
3D Model



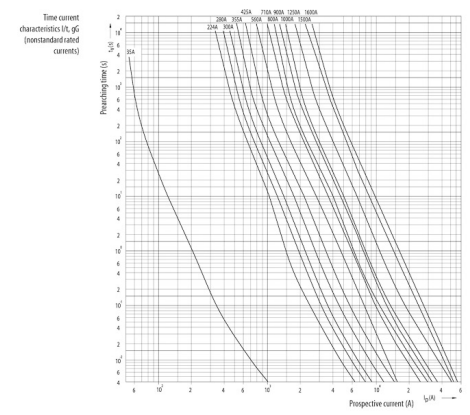
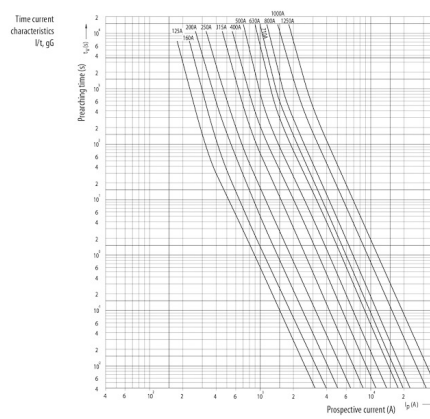
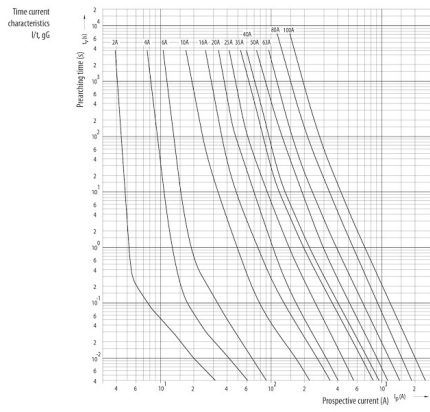
ETIM international classification

Nominal rated current	630A
Nominal rated voltage	500V
Construction size	NH4
Utilization category	gL/gG (cable protection/equipment protection)
Type of fuse status indicator	Top fuse status indicator
Rated voltage AC	500

Melting energy characteristics

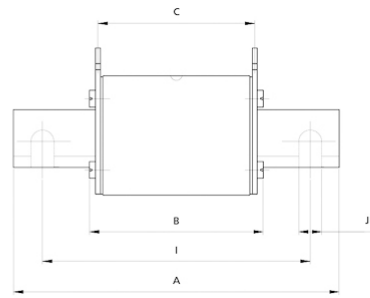


Time current characteristics



Dimension drawing

	A	B	C	D	E	F	G	H	I	J	K	
NV00C	79	53	47	35	15	21	52	7,5			6	kombi
NV00C I	79	53	47	35	15	21	52	7,5			6	kombi
NV00	79	53	47	35	15	28	56	12			6	kombi
NV00 I	79	53	47	35	15	28	56	12			6	kombi
NV0	125	68	65	35	15	28	56	12			6	kombi
NV1C	135	68	65	40	15	28	61	12			6	kombi
NV1C I	135	68	65	40	15	28	61	12			6	kombi
NV1	135	72	65	40	20	46	65	14			6	kombi
NV1 I	135	72	65	40	20	46	65	14			6	kombi
NV2C	150	72	65	48	20	46	73	14			6	kombi
NV2C I	150	72	65	48	20	46	73	14			6	kombi
NV2	150	72	65	48	26	54	73	14			6	kombi
NV2 I	150	72	65	48	26	54	73	14			6	kombi
NV3C	150	72	65	60	26	54	84	14			6	kombi
NV3	150	72	65	60	33	65	84	14			6	kombi
NV4	200	75	66	87	50	100	121	24	150	16	8	
NV4a	200	99	87	85	50	95	121	27			6	
NV4a SI*	200	99	87	85	50	95	121	27			6	
NV1/1000V	155	90	87	40	20	45	59	9			6	



	Striker pin			
	K	L	M	S1
00C	0	20.7	16.7	7.5
00	0	20.7	16.7	7.5
1	13.7	19.7	25	12
2	16.2	27.4	25	12
3	17	35.6	25	12
4a	24	49	25	12

