

CLASS K5 – NLN/NLS SERIES (ONE-TIME) FUSES

250/600 V ac • “One-Time” • 1-600 A



Description

NLN/NLS fuses provide low cost protection for general purpose feeder and branch circuits when available short circuit currents are less than 50 kA.

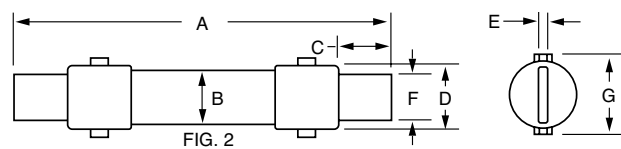
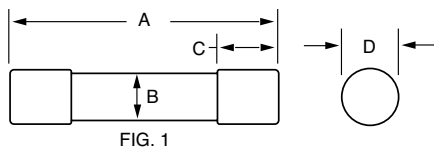
Applications

- General purpose residential and commercial circuits with little or no motor load.

Features/Benefits

- Economical
- 50 kA interrupting rating
- Indicating and DIN mount holders available

Dimensions



AMPERES	REFER TO FIG. NO.	SERIES	DIMENSIONS INCHES (mm)						
			A	B	C	D	E	F	G
1 – 30	1	NLN	2 (50.8)	½ (12.7)	½ (12.7)	9/16 (14.3)	—	—	—
		NLS	5 (127.0)	¾ (19.1)	5/8 (15.9)	13/16 (20.6)	—	—	—
35 – 60	1	NLN	3 (76.2)	¾ (19.1)	5/8 (15.9)	13/16 (20.6)	—	—	—
		NLS	5½ (139.7)	1 (25.4)	5/8 (15.9)	1½ (27.0)	—	—	—
70 – 100	2	NLN	5¾ (149.2)	1 (25.4)	1 (25.4)	1½ (27.0)	⅛ (3.2)	¾ (19.1)	1½ (33.3)
		NLS	7¾ (200.0)	1¼ (31.8)	1 (25.4)	1½ (33.3)	⅛ (3.2)	¾ (19.1)	1¾ (39.7)
110 – 200	2	NLN	7¾ (181.0)	1½ (38.1)	1¾ (34.9)	1½ (39.7)	3/16 (4.8)	1½ (28.6)	1¾ (47.6)
		NLS	9¾ (244.5)	1¾ (44.5)	1¾ (34.9)	1¾ (46.8)	3/16 (4.8)	1½ (28.6)	2¾ (53.2)
225 – 400	2	NLN	8¾ (219.1)	2 (50.8)	1¾ (47.6)	2¾ (53.2)	¼ (6.4)	1¾ (41.3)	2¾ (53.2)
		NLS	11¾ (295.3)	2½ (63.5)	1¾ (47.6)	2¾ (65.9)	¼ (6.4)	1¾ (41.3)	2¾ (73.0)
450 – 600	2	NLN	10¾ (263.5)	2½ (63.5)	2¼ (57.2)	2¾ (65.9)	¼ (6.4)	2 (50.8)	2¾ (73.0)
		NLS	13¾ (339.7)	3 (76.2)	2¼ (57.2)	3¾ (78.6)	¼ (6.4)	2 (50.8)	3¾ (87.3)

Specifications

Voltage Ratings

Ac: 250 V (NLN)
600 V (NLS)
Dc: 250 V (NLN)
400 V (NLS 35 – 60 A)
500 V (NLS 8 – 30 A) (NLS 225 – 600 A)
600 V (NLS 1 – 7 A) (NLS 70 – 200 A)

Interrupting Ratings

Ac: 50 kA rms symmetrical (NLN/NLS)
Dc: 20 kA (NLN/NLS 1 – 60 A)
50 kA (NLN/NLS 70 – 600 A)

Ampere Range

1 – 600 A (NLN/NLS)

Approvals

NLN/NLS: Standard 248-9, Class K5
UL Listed (File: E81895)
CSA Certified (File: LR29862)
CE Compliant (NLN series only)
RoHS compliant (NLN series only)

Environmental

Ordering Information

AMPERE RATINGS					
1	7	25	60	125	300
2	8	30	70	150	350
3	10	35	80	175	400
4	12	40	90	200	450
5	15	45	100	225	500
6	20	50	110	250	600

SERIES	AMPERAGE	CATALOG NUMBER	ORDERING NUMBER
NLS	20	NLS020	ONLS020.T
NLN	15	NLN015	ONLN015.T

Web Resources

Download TC Curves, CAD drawings and other technical information: littelfuse.com/nln
littelfuse.com/nls

Recommended Fuse Holders

LFH60 Series • LFH25 Series

CLASS K5 – NLN/NLS SERIES (ONE-TIME) FUSES

Electrical Specification chart

CATALOG NUMBER	AMPERAGE RATING	VOLTAGE RATING		INTERRUPT RATING		TOTAL CLEARING I ² T (A2s)
		AC	DC	AC	DC	200 kA @ 600V
ONLS015.T	15	600	500	200 kA	20 kA	4940
ONLS030.T	30	600	500	200 kA	20 kA	21600
ONLS060.T	60	600	400	200 kA	20 kA	164000
ONLS100.V	100	600	600	200 kA	20 kA	158000
ONLS200.X	200	600	600	200 kA	20 kA	371000
ONLS400.X	400	600	500	200 kA	20 kA	1510000
ONLS600.X	600	600	500	200 kA	20 kA	6920000

CATALOG NUMBER	AMPERAGE RATING	VOLTAGE RATING		INTERRUPT RATING		TOTAL CLEARING I ² T (A2s)
		AC	DC	AC	DC	200 kA @ 250V
ONLN015.T	15	250	250	200 kA	20 kA	634
ONLN100.V	100	250	250	200 kA	20 kA	50000
ONLN200.X	200	250	250	200 kA	20 kA	260000
ONLN400.X	400	250	250	200 kA	20 kA	1510000
ONLN600.X	600	250	250	200 kA	20 kA	4846000

Disclaimer Notice – Information furnished is believed to be accurate and reliable. However, users should independently evaluate the suitability of and test each product selected for their own applications. Littelfuse products are not designed for, and may not be used in, all applications. Read complete Disclaimer Notice at www.littelfuse.com/product-disclaimer.