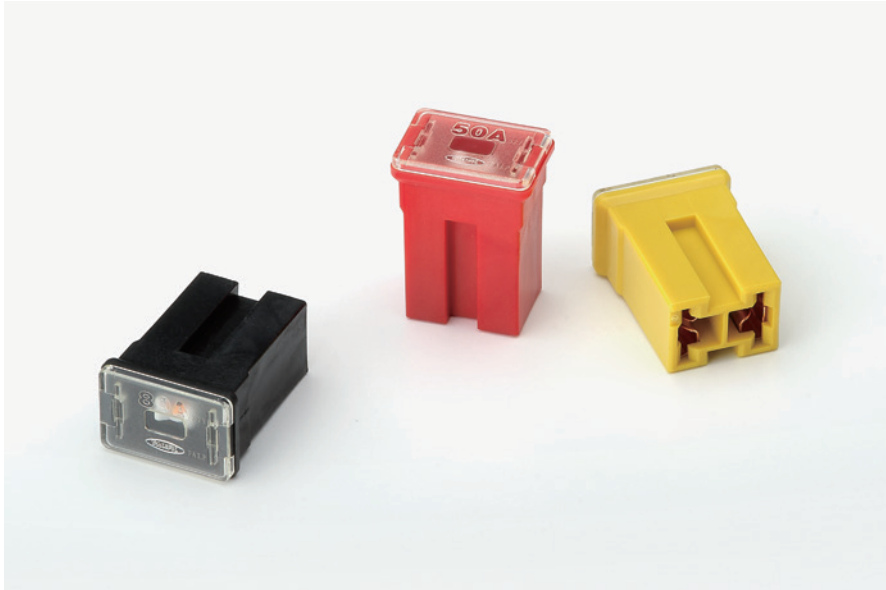


# SBFC-ES

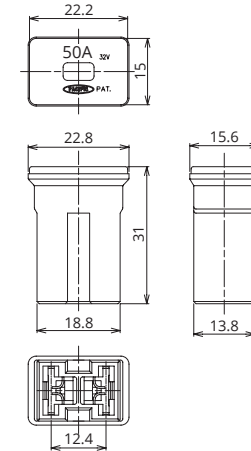
## High-amperage plug-in type fuse



### General Specification

Rated Voltage	DC32V
Breaking Capacity	1000A
Operation Temperature	-40°C~120°C
Standard	ISO8820-4
Country of Origin	Japan
Plating	—
Standard Packaging	500
Insertion Force	44.1N
Extraction Force	9.8N~24.5N
Recommended Torque	—

### Dimensions



### Product Lineup

Ampere Rating(A)	Part Number	Housing Colors	Resistance Value	Voltage Drop*1
50	3354	Red	2.2 mΩ	60 mV
60	3364	Yellow	1.5 mΩ	50 mV
80	3384	Black	1.3 mΩ	52 mV

\*1 Voltage drop: when applying 50% of the rated current of the fuse.

### Time-Current Characteristic

% of Ampere Rating(A)	Operating Time	
	Min	Max
110%	100hrs.	—
200%	2sec.	60sec.
350%	0.2sec.	7sec.
600%	0.04sec.	1sec.

\*The fuse characteristic may change depending on the conditions of use.

### Time-Current Characteristic Chart

